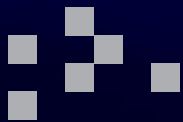


# DISK-TO-DISK-TO-TAPE (D2D2T)

VirtualDR™



# DISK-TO-DISK-TO-TAPE (D2D2T)

VirtualDR™



The VirtualDR™ D2D2T appliance integrates disk storage, tape automation, network connectivity, and server-class processing with powerful replication and file management software, encased in a single enclosure. Included in this easy-to-deploy 4U-high, rack-mountable enclosure is a six-slot Serial-ATA disk array, a 1x10 tape autoloader available in a choice of tape formats and capacities, and a server motherboard with Fibre (FC) connectivity. This combination brings together the best features of tape automation and disk in a single, easy-to-use, high functional package.

## THE BIG PICTURE

- Supports LTO3 and SAIT1 tape technology.
- Speed: up to 576GB/hr.
- Capacity: up to 13 terabytes
- Includes on-board server and backup software.
- Includes 8 x 400GB disk > 3.2TB native, 6.4TB compressed.
- Reliable backups
- Fast backups
- Fast retrieval
- Simple to use
- Supports Fibre (FC) connections.
- WORM enabled.

The VirtualDR™ D2D2T Serial-ATA disks and Fibre connectivity deliver affordable data rates (up to 576GB/hr) for fast replication and virtually instant file recovery. The tape storage offers low-cost, secure archiving and removability not available with disk-only backup systems. The single-box architecture also eliminates network impact from the migration of data between disk and tape.

Each appliance ships pre-loaded with software to manage the file replication from external clients and file migration between disk and tape. It exceeds the data rate capabilities of tape-only systems that typically cost many times more, while providing a richer and more complete range of functionality.

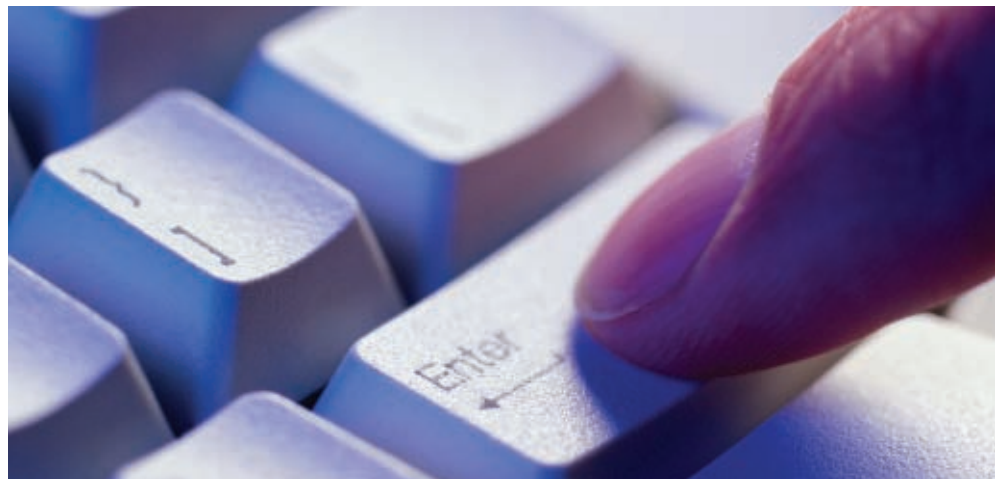
The VirtualDR™ D2D2T appliance can backup a wide variety of servers. They connect natively with a FC (Fibre Channel) interface.

## MODEL OVERVIEW

GST's D2D2T appliance is configured in two configurations:

**LTO-3 MODEL** - Incorporates LTO-3 technology - 1 x drive and 10 cartridges with 8 x 400GB disk drives.

**SAIT-1 MODEL** - Incorporates SAIT-1 technology - 1 x drive and 10 cartridges with 8 x 400GB disk drives.



## KEY FEATURES & BENEFITS

---

**D2D2D FOR SMB** – Ideal for small business, branch office, or department level deployment, D2D2T supports a complete range of information storage and retrieval functionality.

**VALUE** - Integrates the best features of tape automation and disk with backup rates up to 576GB/hr at a price point that is extremely cost effective

**TURNKEY SOLUTION** – Complete backup and recovery solution, pre-configured and pre-loaded with software, ready for plug-and-play deployment.

**POLICY-BASED MANAGEMENT** – Policy-based replication from clients and migration from disk to tape reduce costly management and make recovery quick and easy.

**SEAMLESS FILE RETRIEVAL** – Allows you to retrieve individual files seamlessly from tape or disk

**RELIABILITY** – Saving data directly to disk instead of tape increased MTBF ratings by over 200%

**MAILSLOT** – A separate Mailslot (IO slot) is used for importing and exporting individual tape cartridges under application control.

**BARCODE SELECTIVE RESTORE** – Barcode reader permits cartridge scanning and supports random access for selective restore from specified cartridges.

**CONVENIENT DRIVE INTERFACE** – RS232 interface permits updating firmware and optimizing drive performance.

**SERVICE AND SUPPORT** – A variety of support programs provide installation and onsite service; includes GST's Accelerated Ship Program (GASP) to get replacement units on the scene rapidly.

**WARRANTY** – Purchase price includes a built-in manufacturer's warranty of three years.



# DISK-TO-DISK-TO-TAPE (D2D2T)



## APPLICATION SPECIFICATIONS

Emulation	IBM 3583
CPU	Dual Xeon 3.6GHz
Expansion	5 PCI-X
Memory	2GB (up to 16GB)
Power	Redundant n+1 650 Watt
Disk Capacity	3.2TB Native / 6.4TB Compressed

SPECIFICATIONS	LTO3	SAIT
<b>Capacity</b>		
Native	2 TB	5 TB
Compressed	8 TB	13 TB
<b>Sustained Transfer Rate - MB/s</b>		
Native	80 MB/s	30 MB/s
Compressed	160 MB/s	78 MB/s
<b>Sustained Transfer Rate - GB/hr</b>		
Native	288 GB/hr	108 GB/hr
Compressed	576 GB/hr	281 GB/hr
<b>Drives and Media</b>		
Drive Type	LTO-3	SAIT-1
Media	Ultrium 3	SAIT1-500
<b>Library Configuration</b>		
Number of Tape Drives	1	1
Number of Cartridges	10	10
<b>Library Operation</b>		
Average Cartridge Access	15 seconds	15 seconds
Cartridge Inventory Time	60 seconds	60 seconds
<b>Library Reliability</b>		
MSBF	500,000	500,000
MTRR	< 30 minutes	< 30 minutes
MTB	250,000 hours	250,000 hours
<b>Physical Specs, Appliance Only</b>		
Dimensions (H x W x D), Desk	7" x 17.5" x 31"	7" x 17.5" x 31"
Weight, Desk	75 lbs	75 lbs
Dimensions (H x W x D x U), Rack	7" x 17.5" x 31" x 4U	7" x 17.5" x 31" x 4U
Weight (unpopulated), Rack	75 lbs	75 lbs
<b>Warranty</b>	3 Years	3 Years

1. Compressed Capacity & Transfer Rate Assumes 2:1 (LTO) and 2.6:1 (SAIT) Ratio



3419 Via Lido, Suite 164  
 Newport Beach, CA 92663  
 949.673.1248 ~ 949.673.3163 - Fax  
[www.gstinc.com](http://www.gstinc.com) ~ [sales@gstinc.com](mailto:sales@gstinc.com)

GST, Inc. engineers, manufactures, markets and sells a full line of tape, disk, networking, and memory hardware and high availability and security software plus storage-related services for the midrange server community. Product development closely tracks market needs, providing latest engineering, product design and customer support facilities. For information about the company, its products and support see: <http://www.gstinc.com>.